

Panel Service v1 User's Guide

SDK/J Authentication Package Version:1.0



Copyright © 2008 Ricoh Co., Ltd.

Terms of Use and Trademarks

1. The contents of this specification may be changed without notice in the future.
2. The copying, reproducing, changing, quoting, reprinting, or distributing a part/all of this book are prohibited.
3. We will not be held responsible for any of our customer's losses, disadvantages, or demands from a third party on using this book.
4. Trademarks
 - Ethernet® is a registered trademark of Xerox Corporation.
 - PostScript® and Acrobat® are registered trademarks of Adobe Systems Incorporated in the United States and/or other countries.
 - Microsoft® and Windows® are registered trademarks of Microsoft Corporation in the United States and other countries.
 - UNIX is a registered trademark in the United States and other countries, licensed exclusively through X/Open Company Ltd.
 - Red Hat is a registered trademark of Red Hat, Inc. in the United States and other countries.
 - Linux is a registered trademark of Linus Torvalds in the United States and other countries, or both.
 - Java, JavaCard, JVM(CVM), and CDC are trademarks or registered trademarks of Sun Microsystems, Inc. in the United States and other countries.
 - Eclipse is a trademark or a registered trademark of eclipse.org in the United States and other countries.
 - OSGi(TM) is a trademark or a registered trademark of The Open Service Gateway Initiative in the United States and other countries.
 - Apache is a registered trademark of The Apache Software Foundation in the United States, other countries, or both.

Other product names used herein are for identification purposes only and might be trademarks of their respective companies. We disclaim any and all rights in those marks.

Contents

1. Introduction2

2. Target Readers.....3

3. Installation and Startup.....4

4. FAQs11

Change History12

1. Introduction

This document describes how to install and use an SDK/J application that uses the Panel Service v1.0 (hereinafter referred to as “the Panel Service”) on an MFP/LP.

The Panel Service is a library that allows an SDK/J application to use the access role function of an MFP/LP.

Please read through this document before installing and using such an SDK/J application; important information on installing and using such an SDK/J application is included in this document

2. Target Readers

This document is intended for those who want to install and use an SDK/J application that uses the Panel Service.

Readers are assumed to be familiar with the basics of:

- The access role function of an MFP/LP.
- The Panel Service.
- The Enhanced Authentication Management Library.
- The SDK/J.

3. Installation and Startup

This chapter describes how to install and start an SDK/J application that uses the Panel Service on an MFP/LP.

<< Note >>

An SDK/J application can use the user authentication function of an MFP/LP by using the Panel Service. However, this requires change of the settings of the authentication function of the target MFP/LP. Be sure to change the settings appropriately, or an error will occur. For example, cancellation of the authentication screen will become impossible.

Procedures:

1. Installation of an SDK/J application that uses the Panel Service

- Set Panel Service enabled and install the SDK/J application. For details, see “Authhentication Package Settings Guide” and “Panel Service Developer’s Guide”.

2. Startup of an SDK/J application that uses the Panel Service

- Start the SDK/J application.

3. Configuration of the settings of the authentication function of the target device

- Configure the settings of the authentication function of the target MFP/LP to enable the card authentication.

The card authentication will become available for an SDK/J application that uses the Panel Service when the authentication function of the target MFP/LP is configured as follows:

| | Administrator Auth. Mgmt. (User Admin.) | User Auth. Mgmt. (except User Code Auth.) | Enhanced Auth. Mgmt. | | |
|-----------------------|---|---|----------------------|-------------------------|---------------|
| | | | Settings | Use Other Auth. Methods | *IC Card Type |
| Card and Manual Input | On | On | On | On | RICOH Card |
| Card | On | On | On | Off | RICOH Card |

* This configuration may not exist. It depends on the system firmware version.

To enable the manual input authentication, enable “Use Other Auth. Methods”: specify “On”.

If “Use Other Auth. Methods” is disabled, if “Off” is specified, only the card authentication will be available.

In case of using the logout feature of Panel Service, contact RiDP.

Follow the subsequent instructions to configure the authentication settings.

For details in each model, see its respective document.

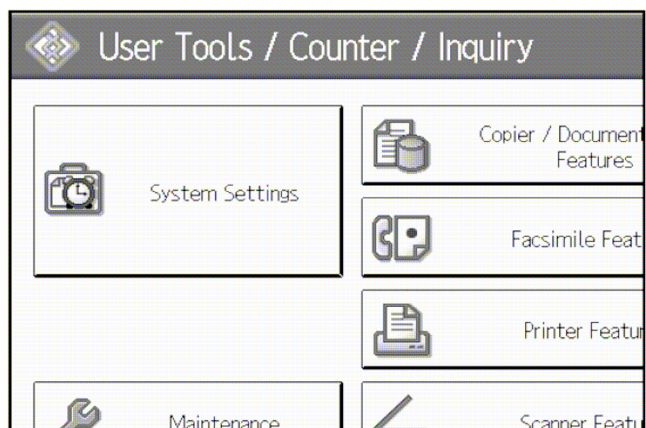
STEP-1 Configuration of the Administrator Authentication Management

Before you can configure the User Authentication Management, you must enable the User Management of the Administrator Authentication Management.

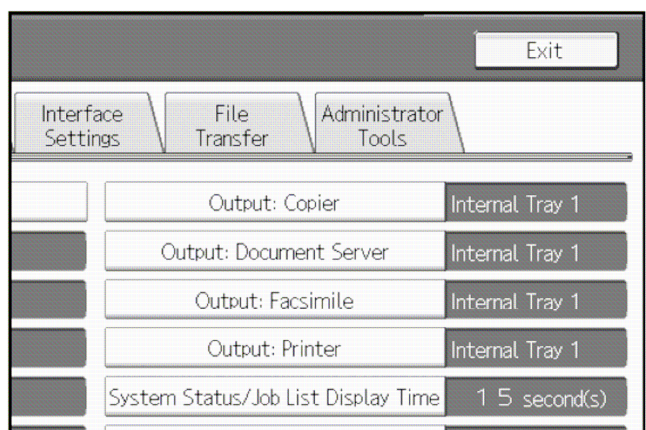
Note: The Administrator manages the address book of an MFP/LP.

1. Press the [User Tools/Counter] key.

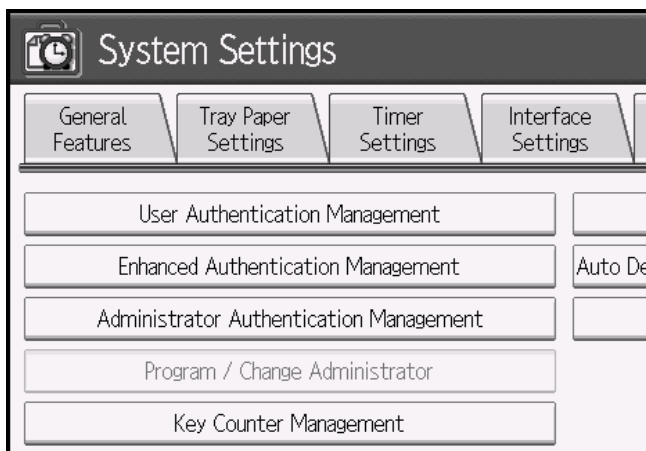
2. Press the [System Settings] key.



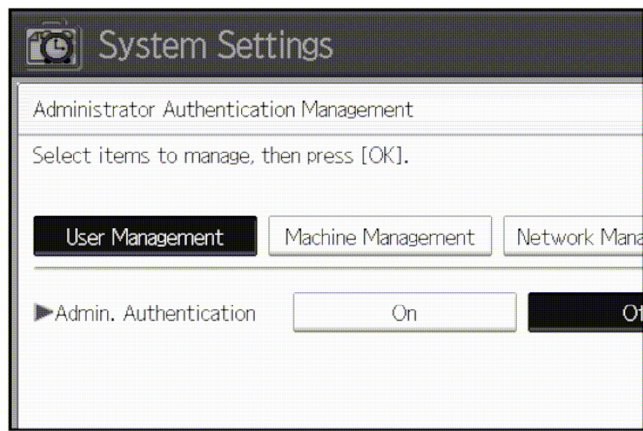
3. Press the [Administrator Tools] key.



4. Press the [Administrator Authentication Management] key.



5. Press the [User Management] key and press the [On] key.

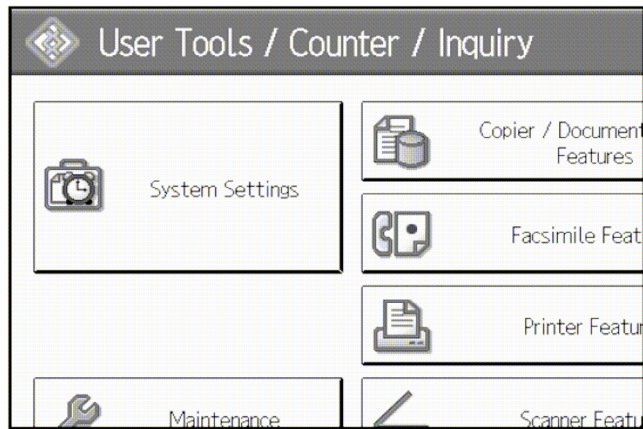


STEP-2 Configuration of the User Authentication Management

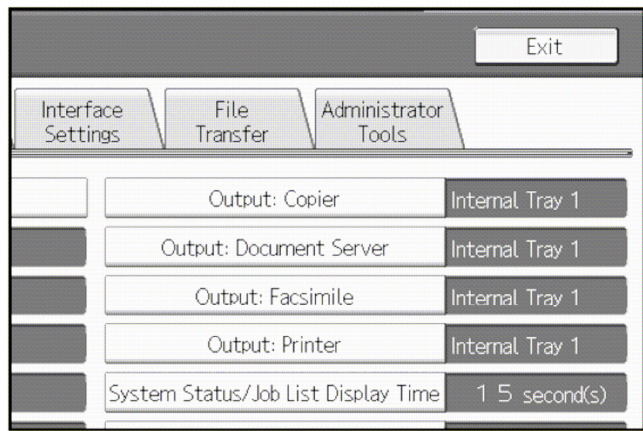
Specify the authentication method to use for user authentication.

1. Press the [User tools/Counter] key.

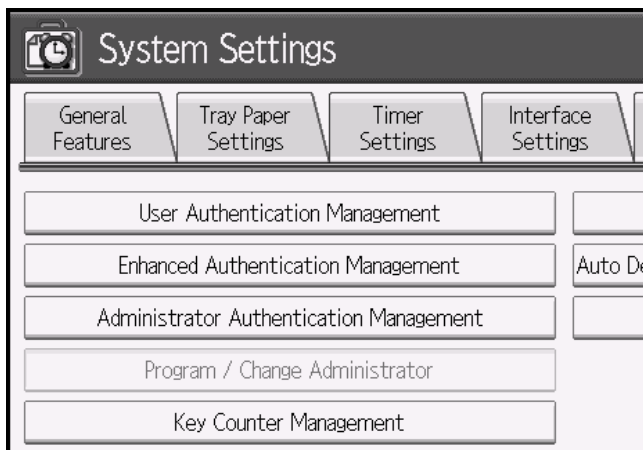
2. Press the [System Settings] key.



3. Press the [Administrator Tools] key.

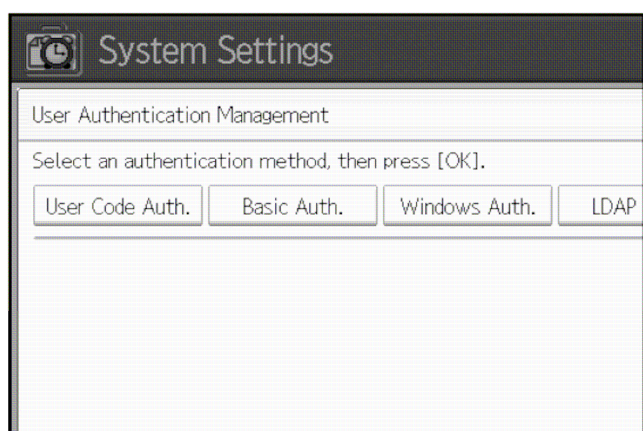


4. Press the [User Authentication Management] key.



5. Specify the authentication method to use for user authentication.

Press one of the available keys: [Basic Auth.], [Windows Auth.], [LDAP Auth.], or [Integration Ser. Auth.]

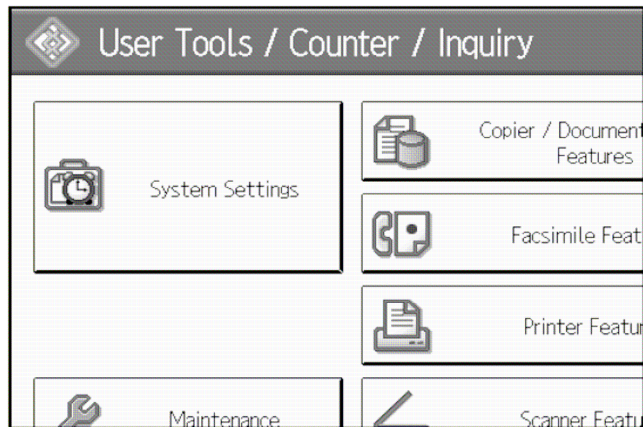


STEP-3 Configuration of the Enhanced Authentication Management

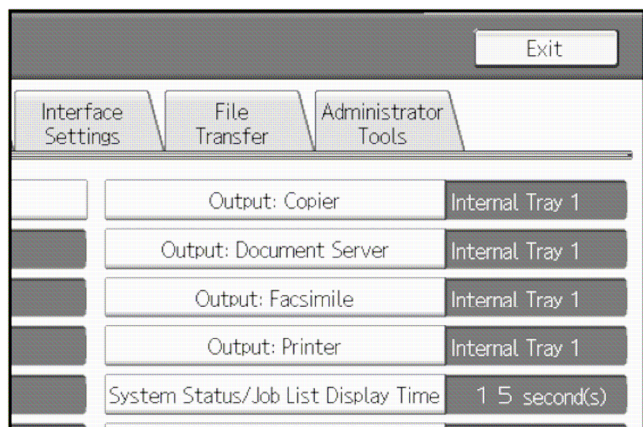
Configure the Enhanced Authentication Management to enable the card authentication.

1. Press the [User Tools/Counter] key.

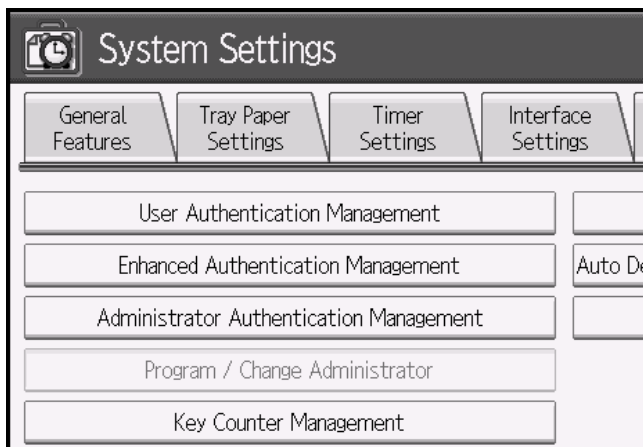
2. Press the [System Settings] key.



3. Press the [Administrator Tools] key.



4. Press the [Enhanced Authentication Management] key and then press the [On] key.



5. Configure the Advanced Settings.

Press the [Advanced Settings] key on the Enhanced Authentication Management screen, and the Advanced Settings screen will be displayed.

- [IC Card Type]

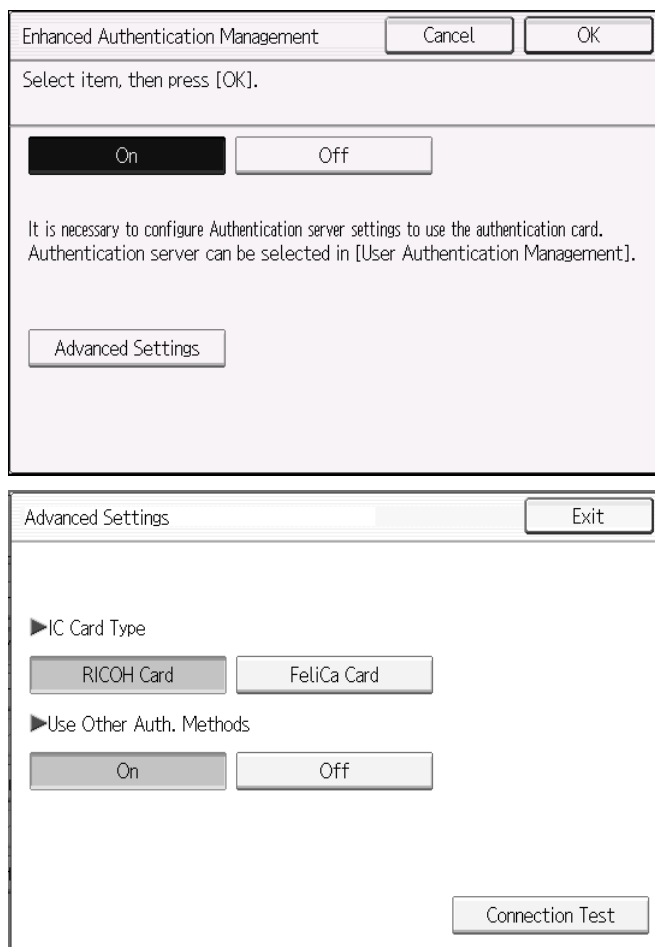
This configuration may not exist. It depends on system firmware version.

Specify "RICOH Card" if this configuration exists.

- [Use Other Auth. Methods]

Specify "Off" if you wish to disable the manual input authentication: only the card authentication will become available.

Note: Before you can specify "Off", you must set the card of the Machine Administrator to the card reader device. That is, when you specify "Off", make sure that the card of the Machine Administrator is set to the card reader device.



<< Note >>

If the Enhanced Authentication Management settings is [On], DO NOT stop/uninstall the Panel Service application and DO NOT remove the VM card on which the Panel Service application is installed. Otherwise SC 636-01 will occur.

4. FAQs

This chapter shows FAQs and answers.

| Question | Answer |
|--|--|
| What is the card of the Machine Administrator? | It is a card that contains information which corresponds to the login user name and login password of the Machine Administrator in your application. |
| Can not configure the user name and password of a user in an address book. | To configure the user name and password of a user in an address book, the User Administrator Authority is necessary. Login to the machine with the User Administrator Authority. Note that editing of user information is possible only when the Authentication Management is ON. |
| Can not cancel the authentication screen. | To cancel the authentication screen, change of the settings of the User Authentication Management is necessary. Login to the machine with the Machine Administrator Authority from the Web Image Monitor, and then change the settings. For details, see the document supplied with the machine. |
| SC 636-01 occurred. | Set Panel Service API enabled by editing /sdk/ap.properties in your SDK/J SD card and restart the device. (If SC636-01 occurred again, please wait until the JavaVM is started, then please restart the device again.) If SC does not disappear after 2 nd restart, please contact RiDP. * Please do not remove SDK/J SD card or do not set Panel Service API disabled while the Enhanced Authentication Management is enabled on the device. |
| SC 636-02 occurred. | Wait until the JavaVM is started, then please restart the device. If SC does not disappear after restart, please contact RiDP. |
| Don't know the user name and password of the User Administrator/Machine Administrator. | Login to the machine with the Supervisor authority, then It is possible to: - check the login user name of the User/Machine Administrator - change the login password of the User/Machine Administrator For details, see the document supplied with the machine. |

Change History

| | |
|---------------|--|
| Ver. 1.0beta | First Release |
| Ver. 1.0beta2 | Beta 2 Release Updated FAQs |
| Ver. 1.0 | SDK/J Authentication Package v1.0 Final Release |
| Ver. 1.1 | SDK/J Authentication Package v1.1 Release Add description for IC Card Type configuration. |